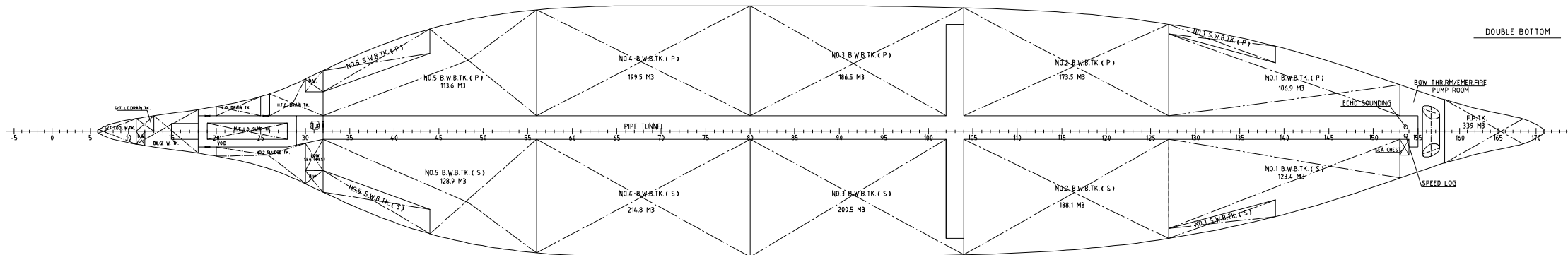
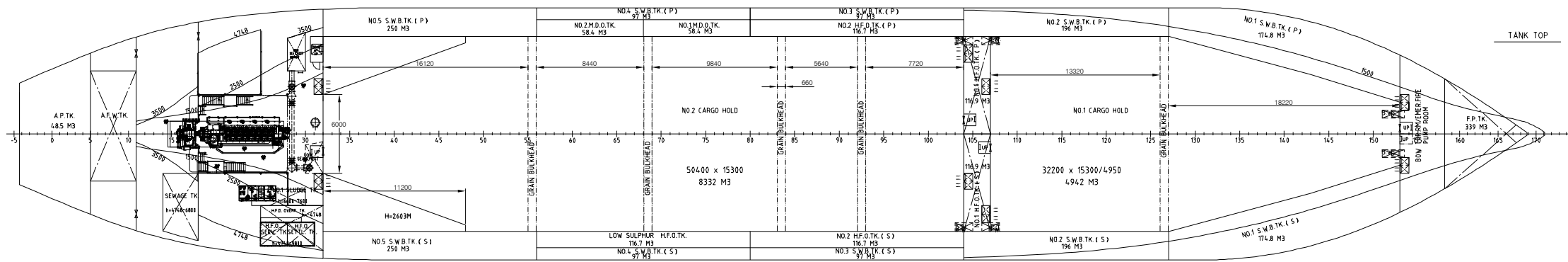
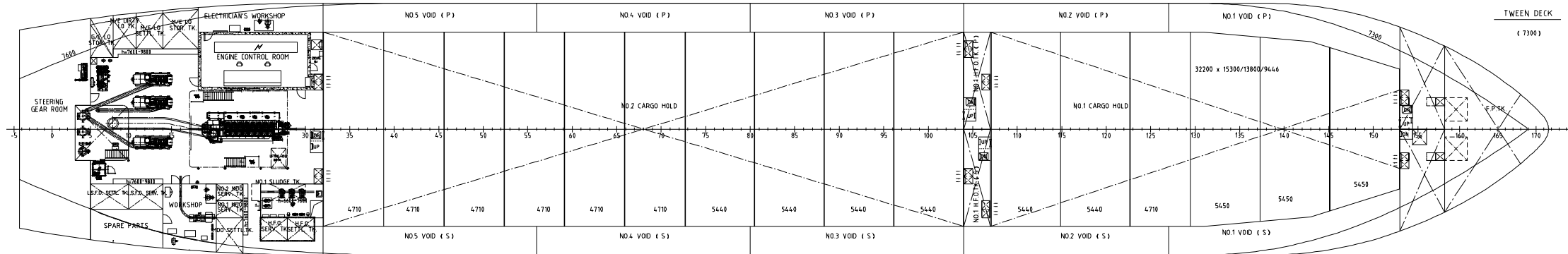


DETAIL DESIGN 详细设计		9000DWT MULTI-PURPOSE VESSEL 9000吨多用途船	SC4529-100-04B
current rev. 当前版本	O	GENERAL ARRANGEMENT PLAN 总布置图	HULL NO.: CD080200/01/02/03
DESIGNED 设计	X.L. YANG 日期 2011.04	WEIGHT 重量	SCALE 比例尺 1:200
CHECKED 校核	J.H. FU 日期 2011.04	DISPLACEMENT 排水量	1/2 1.00 m ³
APPROVED 批准	Z.X. TAO 日期 2011.04	SHANGHAI MERCHANT SHIP DESIGN & RESEARCH INSTITUTE 上海船舶研究设计院	

This drawing and the information contained is the exclusive property of SDARI and must not be copied or handed over to third parties without our written permission.
本图(文件)及所含内容的知识产权属于上海船舶研究设计院(SDARI)。未经本院书面许可,任何人不得复制或转交第三方。
面积 AREA: 0.50 m²

会 签
底图登记号



PRINCIPAL PARTICULARS

LENGTH O.A.	122.20 m
LENGTH B.P.	116.00 m
BREADTH	19.80 m
DEPTH	10.70 m
DRAFT MLD	7.20 m
DEADWEIGHT (EXCL. TWEENDECK)	9214 t
WEIGHT OF TWEENDECKS	301.5 t
NAVIGATION AREA	UNRESTRICTED AREA
CONTAINER CAPACITY	
ON DECK	330 TEU
IN HOLD	264 TEU
TOTAL	594 TEU
REEFER CONTAINER	44 FEU
MAIN ENGINE TYPE	HIMSEN 8H32/40PX1 set
MAIN ENGINE OUTPUT/ROTATE SPEED (100%MCR)	4000 kW/750rpm
SERVICE SPEED (90%MCR, AT 7.20 M MLD DRAFT)	14.3 kn
ENDURANCE	10000 nautical miles
SELF-SUPPORTABILITY	32 days
COMPLEMENT	12 p
GROSS TONNAGE	7600
CLASSIFICATION	BV HULL General Cargo Ship, Equipped for Carriage of Containers, Heavy Cargo(176.4 kN/m ²), Unrestricted Navigation, SOLAS-II-2 Reg.19, ICE CLASS ID MACH AUT-UMS, Mon-Shaft, I.W.S.

会 签

图底图登记号

底图登记号

DETAIL DESIGN 详细设计		9000DWT MULTI-PURPOSE VESSEL 9000 吨多用途船	SC4529-100-04B
current rev. 当前版本	O	GENERAL ARRANGEMENT PLAN 总布置图	HULL NO.: CD080200/01/02/03
DESIGNED 设计	X.L. YANG 日期 2011.04	WEIGHT 重量	SCALE 比例尺 1:200
CHECKED 校核	J.H. FU 日期 2011.04	NO. OF SHEETS 张数	1.00 张
APPROVED 批准	Z.X. TAO 日期 2011.04	SHANGHAI MERCHANT SHIP DESIGN & RESEARCH INSTITUTE 上海船舶研究设计院	

This drawing and the information contained is the exclusive property of SDARI and must not be copied or handed over to third parties without our written permission.
本图(文件)及所含内容的知识产权属于上海船舶研究设计院(SDARI)。未经本院书面许可,任何人不得复制或转交第三方。